



Regional LMI Newsletter December 2018



Access to Local Labour Market Information is essential to ensure that students make the best possible choices about their future education, jobs and careers.

Find below a roundup of news items and job information from the region

1

4,700

is the number of jobs it is estimated will have to be created in the region in the health & social care sector by 2030



There are currently around 2000 available jobs within the region, ranging from social workers, health care assistants, wellbeing coordinators, tutors and residential care workers. Large employers include the NHS, Care in Mind, Horizon Care & Education Group and Springfield Homecare. More information on working in this field can be found at www.healthcareers.nhs.uk/working-health/working-social-care

2

600

new jobs should be created in the region's life sciences sector by 2027



There are only currently approximately 200 jobs in the life sciences sector in the region, so a rise of 300% will open up a lot of opportunities. Areas covered include clinical research, pharmaceuticals, biodiversity and biomedical science. Large employers include Covance, Johnson & Johnson and PPD. More information can be found at www.sciencecareerpathways.com/life-science-careers/

3

615,000

the number of people in the region working in a high-skilled job



4

3x

High skilled management, professional and associate professional jobs will grow 3 times quicker than all others



5

300,000

Due to replacement needs, this is the number of job openings expected over the next ten years



6

400,000

The number of jobs at risk due to advances in technology and automation, mainly manual or low-skilled. However, this will lead to new, different opportunities



7

30,000

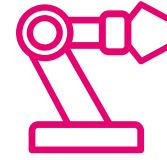
The number of apprenticeships started in the region in 2016/17



8

6

The number of growth industries in the region - manufacturing, engineering, construction, digital, health and creative. Find more information here: <http://futuregoals.co.uk/>



9

Local Jobs News



Pizza Express is to open its first restaurant in Bradford shortly, creating a number of catering and hospitality jobs



TJ Hughes is due to return to Bradford with a new store in the Kirkgate Centre, creating a large number of positions



A new retail park is soon to open in Lidget Green. Consisting of an Aldi, Greggs, Starbucks, Home Bargains and a pub; lots of retail jobs will be created



Over 130 jobs have been lost with the closure of a double-glazing firm in Bradford. SafeGlaze UK went into administration at the end of October